



# Curved Tempered Concave Glass

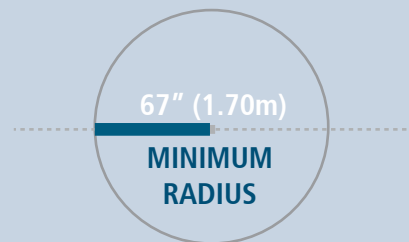
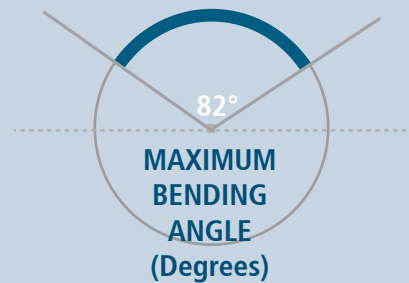
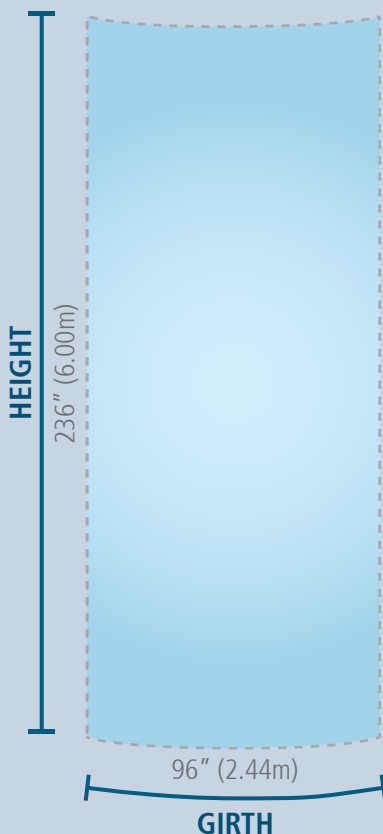


Combines the beauty of curved glass with the strength to withstand thermal stress and wind loads, and the added value ability to drill and cut holes in the glass for increased design capabilities.

## Manufacturing Capabilities

- All glass colors
- 1/4" to 3/4"
- Spandrel/Silk-Screened
- Digital Printing
- Low E
- Holes, Notches & Cut-outs
- Edge Finishes
- Laminated
- IGU

## Size Limitations



### Laminated Glass Notes:

Glass Thickness:  
Min: 1/4" + 1/4"  
Max: 4"

Interlayer Thickness:  
From 0.030" to 0.090"

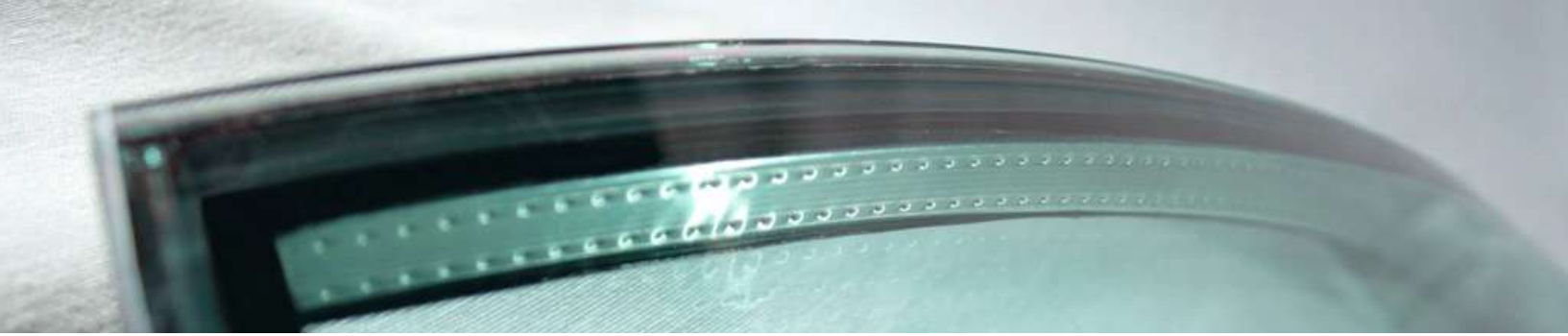
### Interlayer Types:

- PVB Clear  
126" (3.20m) x 236" (6.00m)
- PVB Color/Opaque/Translucent  
96" (2.45m) x 236" (6.00m)
- SentryGlas® Clear  
106" (2.70m) x 236" (6.00m)
- SentryGlas® Translucent White  
72" (1.83m) x 236" (6.00m)
- XIR®  
79" (2.00m) x 236" (6.00m)

### IGUs Notes:

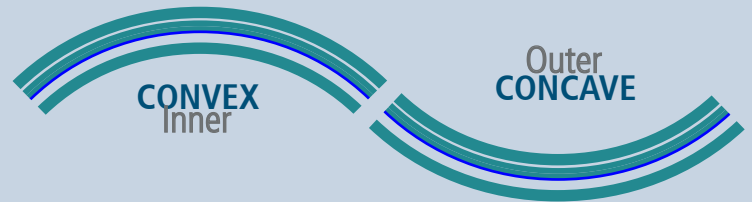
Glass Thickness:  
Min: 1/4" + 1/4"

Triple IGUs Available

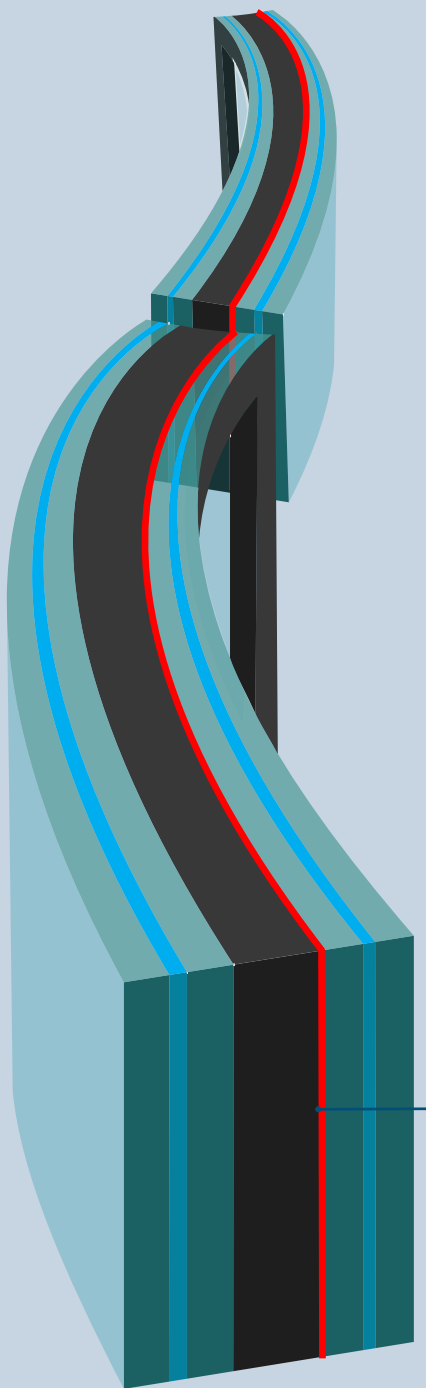
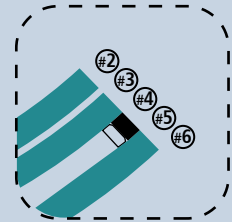
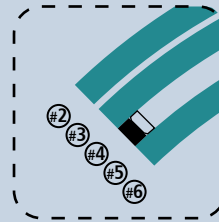


# Characteristics

## Glass Surfaces



Coatings (Low E, Frit, Digital Printing)



Coatings (Low E, Frit)  
On the same surface regardless of  
the curve being Convex or Concave



Please contact our Sales Team regarding any specific design criteria or quoting considerations you may have.

**Contact:** [sales@criscurva.com](mailto:sales@criscurva.com)  
Toll Free: 866.827.6049



[www.criscurva.com](http://www.criscurva.com)



[click here](#)